

## SPECIFICATIONS

<b>Model</b>	• HM3200R
<b>Print Head</b>	• Water-based Kyocera print head
<b>Print head Qty</b>	• 4—6pcs
<b>Max Printing Resolution</b>	• 600x1800dpi
<b>Production Speed</b>	• 600x600dpi (1pass)      • 600x1200dpi (2pass)      • 600x1800dpi (3pass) • 360m <sup>2</sup> /hr                      • 180m <sup>2</sup> /hr                      • 120m <sup>2</sup> /hr
<b>Printing Height</b>	• 2—30mm
<b>Media Conveying</b>	• Roll-to-Roll, Auto constant tension feeding&taking up
<b>Max Printing Width</b>	• 3300mm
<b>Max Media Width</b>	• 3350mm
<b>Dimension (L/W/H)</b>	• Printer: 5600mm x 1920mm x 2150mm • Package: 5800mm x 1950mm x 2240mm
<b>Ink Type</b>	• Water-based sublimation ink
<b>Ink Color</b>	• 4-8 colors • C, M, Y, K, Orange, Blue, Fluorescence yellow, Fluorescence pink, Lc, Lm, Turquoise (optional)
<b>Ink Supply</b>	• Peristaltic-pump ink supply, Ink degassing, Auto negative pressure system
<b>Media Type</b>	• Transfer paper, coated or uncoated polyester
<b>Max Roll Diameter</b>	• 500mm (standard unwinder&winder roll)
<b>Max Roll Weight</b>	• 200kg (full width, standard unwinder&winder roll)
<b>Drying</b>	• Hot air
<b>Rip Software</b>	• Caldera, Neostampa, Texprint
<b>Power supply</b>	• AC380V three phase   36A (22.7kW)   50Hz/60Hz
<b>Compressed air supply</b>	• 0.6 Mpa   0.15m <sup>3</sup> /hr (dry,no oil or water)
<b>Working Environment</b>	• Temperature: 20~28℃ (68~77℉) • Relative humidity: 45-60% (no condensing)

**HOMER**  
Digital Textile Printer



## HM3200R

### Industrial large-format high-speed Roll-to-Roll dye-sublimation digital printer

- Outstanding printing speed and quality; excellent reliability and stability.
- Advanced mechanic and software design; High-efficiency data processing technology.
- A dual purpose printing system that combines direct-to-polyester based textile printing with dye sublimation transfer printing technology.
- Top-level R&D team ensures continuous innovation and product optimization, and keeps us at the technology forefront in digital inkjet printing.
- Strong worldwide service team responds promptly to your questions and concerns.
- Cost-effective products bring you more business and profit.



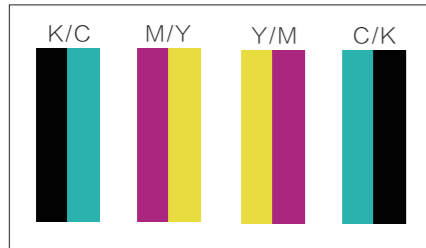
Shenzhen HOMER Textile Tech Co.,Ltd  
Add:The Third Factory, NO.322 Yuanhu Road, Longgang District Shenzhen China.  
Tel: +86 0755-23061585  
Fax: +86 0755-23217841  
E-mail: info-homer@hanglorygroup.com  
Http://www.homertech.com



**HOMER**  
Digital Textile Printer



# HM3200R



### Symmetrical color alignment

Color sequences are aligned in symmetry, so in back and forth printing the color aberration is reduced and color consistency is improved.

### Up to 360 m<sup>2</sup>/hr printing speed

Attributed to advanced mechanical structure and self-developed high-performance hardware & software system, the equipment delivers printing speed up to 360 m<sup>2</sup>/hr.

### Anti-scratch printhead protection design

The Anti-scratch system with laser sensors will suspend the printhead carriage for any potential media irregularities, to prevent damage to the printheads and maximize printheads' working life.



### Industrial ink supply system: Peristaltic-pump ink supply+Automated negative pressure monitoring & adjusting system+ Efficient ink degassing

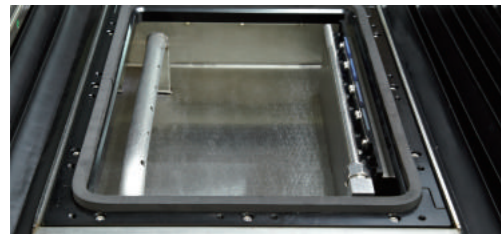
Peristaltic pumps keep the kinetic energy of ink supply at a constant level; negative pressure is detected and adjusted in real time automatically; the efficient degassing modules clear the bubbles in ink tubes to avoid ink starvation. These three designs work together to make ink spurted out smoothly to provide higher printing stability for industrial continuous production.

### Integrated software control system

Self-developed control software is fully automatic for smart operation. One operator is able to control multiple machines.

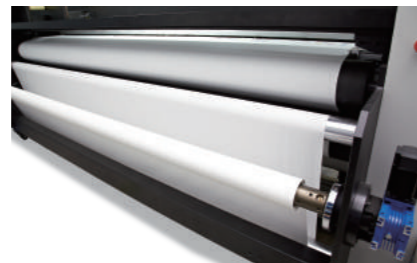
### Industrial-level stable performance

This equipment has passed the 7x24 hour reliability test. The high-end industrial design and sound digital solutions have made it a perfect choice for industrial production.



### Intelligent constant-moisturizing capping system and Creative auto-wiping printhead self-cleaning system

Built-in humidifier enables mist spray automatically, so constant moisturizing of nozzles guarantees the stability of ink supply system and prevents blocked nozzles caused by dry ink. Automated head wiping removes the residual ink on the nozzle surface, to guarantee continuous printing.



### Tension-adjustable continuous winding/unwinding control technology

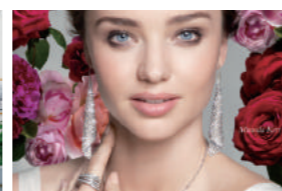
Equipped with full servo motors for feeding and taking-up, the stepping accuracy of the machine is greatly enhanced. The laser sensor at the winding section measures the roll diameter in real time for constant and smooth winding.



Dye sublimation transfer paper printing



Home textile direct printing



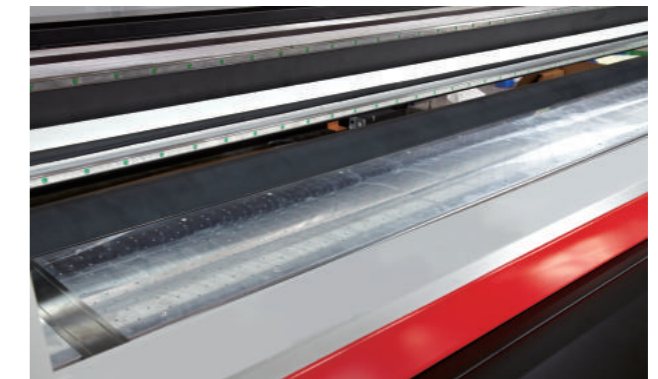
Direct-to-textile signage printing

### Kyocera-certified original ink

The Homer ink with Intertek certification has been certified by Kyocera, matching well with Kyocera print heads. It delivers pure color and smooth output.



Peristaltic-pump ink supply



### Adjustable vacuum system

The vacuum power can be adjusted by software for different printing media, so the media flatness is optimized to improve the accuracy of ink drop point.